

Available for Lease or Sale— Office



350 South Main Street Suite 101, Doylestown PA

PROPERTY SPECIFICATIONS

SITE	This project has been designed to provide a Corporate Campus Setting with traditional Doylestown ambiance. The building facades are completed with a colonial brick design. integrated landscaped courtyards.
SUITE SIZE	3,296 SF Building on two levels
OFFICE	Quality interior finishes featuring attractive and energy efficient construction has been renovated 2017. New: Windows Lighting Carpets Fixtures
PARKING	Surface



GELCOR REALTY, INC.
416 Bethlehem Pike
Fort Washington, PA 19034

**FOR MORE INFORMATION
PLEASE CONTACT:**

Frank Gonser
fgonser@gelcor.com

215-588-7401

www.gelcor.com

Location/Interior Photos



LOCATION – Well located just off Main Street in Doylestown Borough.

Minutes From:

Doylestown Train Station

Courthouse

Doylestown Restaurant Row

Example of Renovated Interior finishes



350 South Main Street Suite 101, Doylestown PA

GELCOR REALTY, INC.
416 Bethlehem Pike
Fort Washington, PA 19034

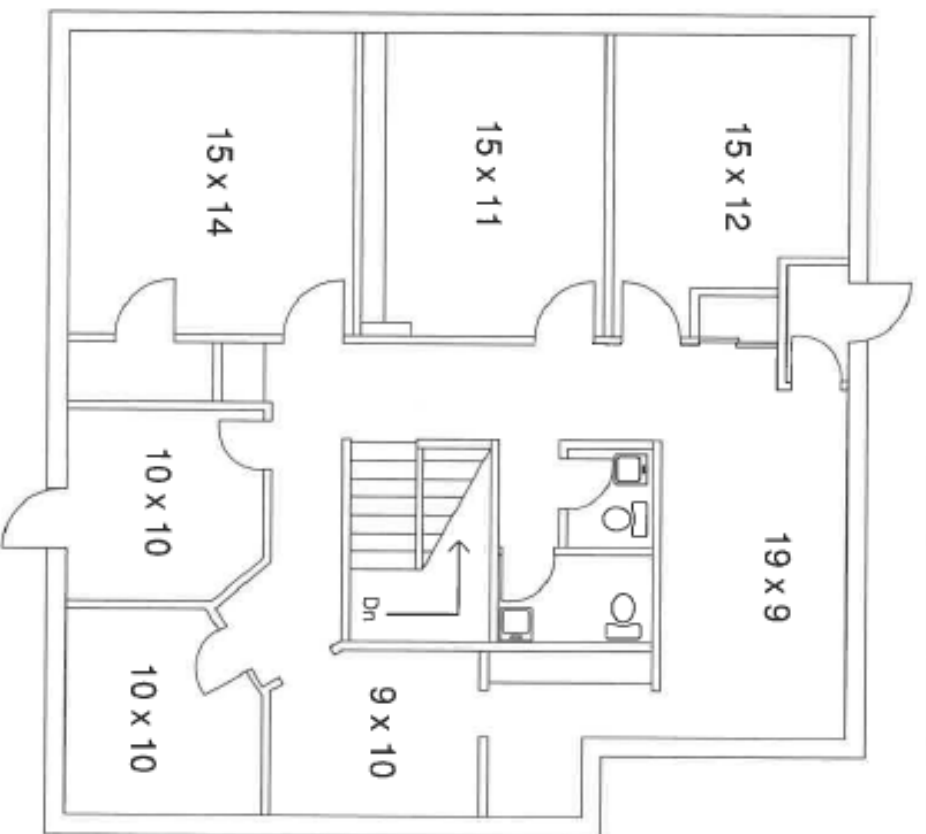
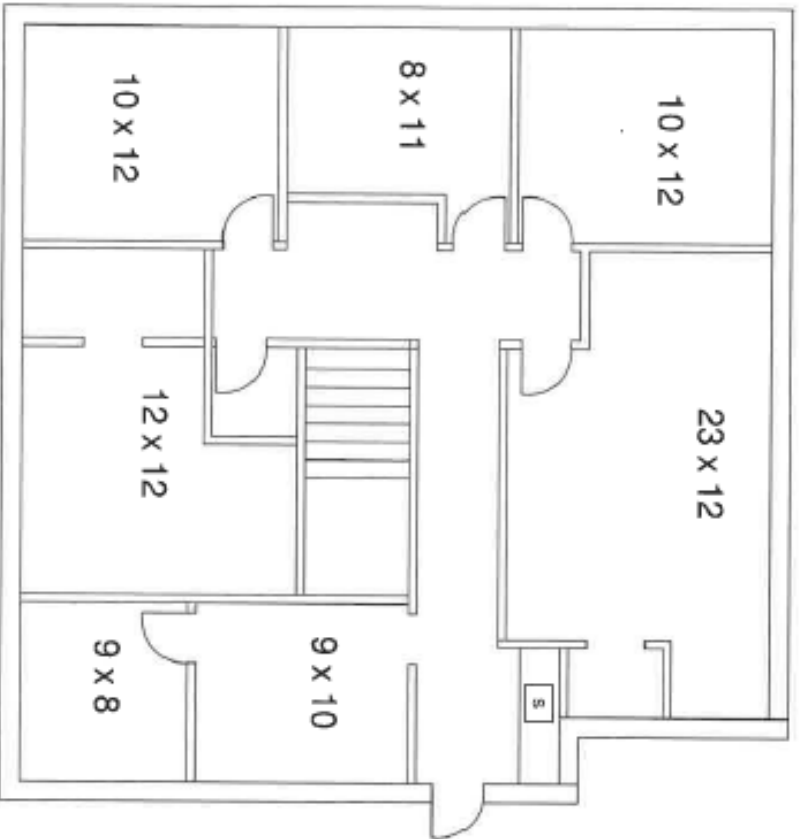
**FOR MORE INFORMATION
PLEASE CONTACT:**

Frank Gonser
fgonser@gelcor.com

215-588-7401

www.gelcor.com
n@gelcor.com

215-591-9300 x 21



Suite 101

Penn's Court Office Condominium

350 South Main Street
Doylestown, PA

January 7, 2005

Not to Scale

C:\Pisa\Work\ps

* All dimensions
are approximate